

A Workplace That Brightens Magok, Seoul The Nexen UniverCITY

Walk about one minute toward the Banghwa Bridge from Seoul Metro Line 9 Magongnaru Station, the area that marks the start of the Magok Business District, and you will be soon mesmerized by a unique, irregularly-shaped eight-story building. This is Nexen Tire's new R&D center known as The Nexen UniverCITY constructed by Ssangyong E&C. The building's exterior features a comb pattern that resembles the surface of a tire.



[Chairman and CEO S. Joon Kim receiving greetings from Ho Chan Kang (left) and Chairman Byeong Jung Kang (middle) of Nexen Tire, before the completion ceremony on April 30]



“ A global R&D control tower that will drive growth for the future ”

Project Overview

- **Project Name:** The Nexen UniverCITY Construction Project
- **Project Value:** USD 81.7 million (first amended amount). Currently, the final amount is being adjusted through discussions with the client.
- **Project Period:** 18 months (October 2017 – March 2019)
- **Project Scope**
One building (2B/8F) with a total floor area of 57,171 m²
- **Site Location:** Magokjungang-ro, Gangseo-gu, Seoul


[Photo of the completed site]

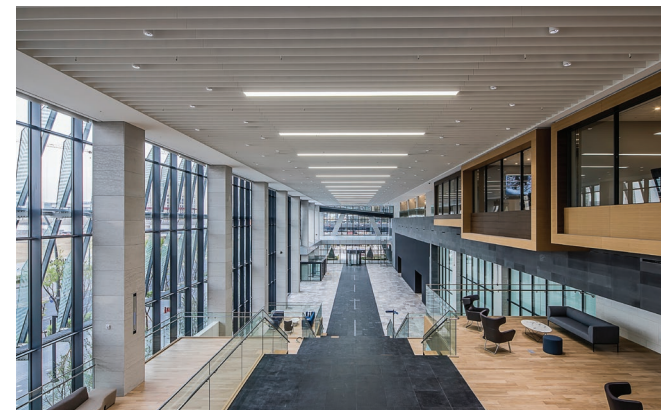
On May 8, a group of Ssangyong E&C employees visited The Nexen UniverCITY, Nexen Tire's new R&D center. It opened on April 30 after some 600 Nexen employees completed relocation, and now is fully functioning as an R&D center and office space.

The building (B2/8F) has a total floor area of 57,171 m² and features a spiral walkway, an atrium, a rooftop garden and other eco-friendly energy facilities (recognized by Green 2 Grade G-Seed Certification and Grade 1 Building Energy Efficiency Rating), in addition to Innovation Lounge, a book café and other employee facilities.

This construction project was part of the scheme to establish a global R&D control tower, a goal which Nexen Tire has been pursuing since 2013.

The tire company is planning to develop this new R&D center as one of its four growth engines, along with a factory in the Czech Republic and R&D centers in the U.S. and Germany.

Notably, the project was completed in only 18 months despite frequent changes in design and the extensive total floor area (57,171 m²). In addition, Ssangyong E&C partnered with HAEAHN Architecture, a high-end architectural design firm. These facts will be viewed in a positive light during future sales activities. 



[Lobby]



[Innovation Hall at the research wing]



[Office wing]



[Lecture hall]